

# Quick Start Guide

## *GV-IP Decoder Box Plus*



**Note: no SD/SDHC card slot or local storage function in Argentina**

Thank you for purchasing GV-IP Decoder Box Plus. This guide is designed to assist the new user in getting immediate results from the GV-IP Decoder Box Plus. For more details, please refer to the *GV-IP Decoder Box Plus User's Manual*.



© 2016 GeoVision, Inc. All rights reserved.

Under the copyright laws, this manual may not be copied, in whole or in part, without the written consent of GeoVision.

Every effort has been made to ensure that the information in this manual is accurate. GeoVision, Inc. makes no expressed or implied warranty of any kind and assumes no responsibility for errors or omissions. No liability is assumed for incidental or consequential damages arising from the use of the information or products contained herein. Features and specifications are subject to change without notice.

**Note:** No memory card slot or local storage function for Argentina.

GeoVision, Inc.  
9F, No. 246, Sec. 1, Neihu Rd.,  
Neihu District, Taipei, Taiwan  
Tel: +886-2-8797-8377  
Fax: +886-2-8797-8335  
<http://www.geovision.com.tw>

Trademarks used in this manual: *GeoVision*, the *GeoVision* logo and GV series products are trademarks of GeoVision, Inc. *Windows* and *Windows XP* are registered trademarks of Microsoft Corporation.

May 2016

# Contents

<b>1. Introduction.....</b>	<b>2</b>
1.1 Compatible Devices .....	2
1.2 Packing List.....	3
1.3 Optional Accessories .....	3
<b>2. Overview.....</b>	<b>4</b>
2.1 Front View .....	4
2.2 Rear View .....	5
<b>3. Connection.....</b>	<b>6</b>
<b>4. Setting up the Network.....</b>	<b>8</b>
<b>5. Adding IP Devices to Live View Grid .....</b>	<b>9</b>
5.1 Adding IP Devices through Automatic Search .....	9
5.2 Adding IP Devices Manually .....	10
5.3 Assigning IP Devices to Live View Grid .....	12
<b>6. Adding Devices Using GV-IP Device Utility.....</b>	<b>13</b>
6.1 Adding a GV-IP Device .....	13
6.2 Adding a Third-party Device .....	16
<b>7. Accessing Live View.....</b>	<b>18</b>
7.1 Capturing Snapshots .....	19
<b>8. Upgrading the Firmware.....</b>	<b>20</b>

# 1. Introduction

Welcome to the *GV-IP Decoder Box Plus Quick Start Guide*. In the following sections, you will learn about the basic installations and configurations of the GV-IP Decoder Box Plus. For the details, see *GV-IP Decoder Box Plus User's Manual*.

## 1.1 Compatible Devices

The GV-IP Decoder Box Plus is compatible with:

1. GV-IP Camera, GV-Video Server and GV-Compact DVR using H.264 codec
2. Third-party IP devices that support H.264 and adhere to RTSP or ONVIF
3. GV-Mobile Server

---

**Note:** Upgrade your GV-IP Devices to the latest firmware version if you encounter any connection problems.

---

To decode and display **non-H.264** IP channels or **analog** channels, connect the devices to GV-System (GV-DVR / NVR) and access them through GV-Mobile Server.

## 1.2 Packing List

1. GV-IP Decoder Box Plus
2. AC/DC adapter (12 V, 3 A, 36 W)
3. Power cord
4. USB mouse
5. Software DVD
6. Warranty card

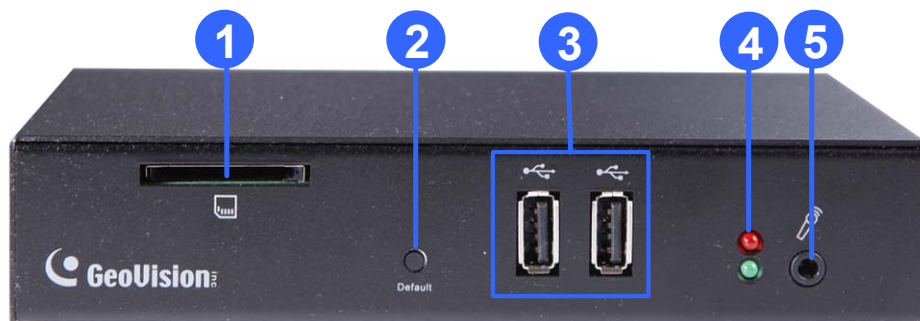
## 1.3 Optional Accessories

Optional devices can expand your GV-IP Decoder Box Plus's capabilities and versatility. Contact your dealer for more information.

Options	Description
<b>Wall Mount Kit</b>	The kit is used to mount the GV-IP Decoder Box Plus to the wall.
<b>GV-Joystick V2</b>	The GV-Joystick V2 facilitates focusing, zooming, panning, tilting of GeoVision and third-party PT, PTZ and Speed Dome cameras on GV-IP Decoder Box Plus.

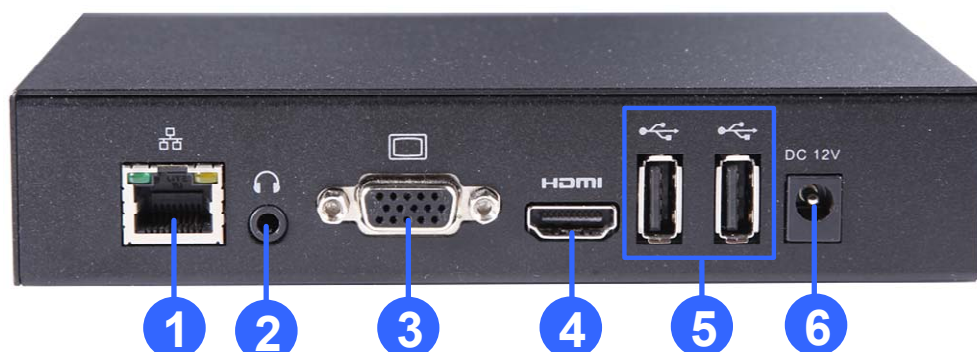
## 2. Overview

### 2.1 Front View



No.	Name	Function
1	SD Card Slot	Connect to an SD card for local storage of snapshot and firmware upgrade.
2	Default	Reset the GV-IP Decoder Box Plus to the default factory settings. Use a pin to press the default button for about 10 seconds. The system will then reset and reboot itself shortly.
3	USB	Connect to a GV-Joystick V2, USB mouse, or USB storage device.
4	LED Indicators	The green LED indicates the system is ready for use. The red LED indicates the power is supplied.
5	Audio In	Not functional.

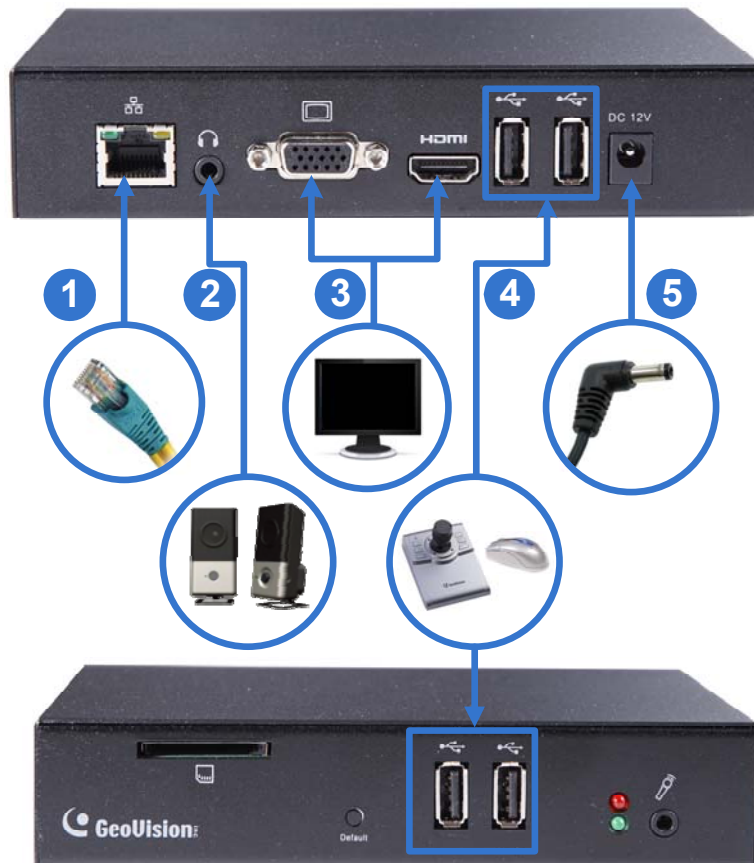
## 2.2 Rear View



No.	Name	Function
1	Network	Connect to the network.
2	Audio Out	Connects to a speaker.
3	VGA	Connect to a VGA monitor.
4	HDMI	Connect to an HDMI supported display device.
5	USB	Connect to a GV-Joystick V2, USB mouse, or USB storage device.
6	DC 12V	Connect to power by using the supplied power adapter.

### 3. Connection

Follow the steps below to connect the GV-IP Decoder Box Plus:



1. Connect the device to the LAN port using an RJ-45 cable.
2. Connect a speaker to the audio line out port if needed.
3. Connect a display device to VGA connector or HDMI connector for video output.
4. Connect a mouse and / or GV-Joystick V2 to the USB ports.
5. Connect to power using the supplied power adapter.

---

#### Note:

1. You can only connect the GV-IP Decoder Box Plus to one display device through the HDMI or VGA connector.
  2. The default video output is set to HD 720P resolution. If you use a VGA monitor, be sure to change the output resolution to VGA 1024 x 768. To change the output resolution, see *4.1 System* in *GV-IP Decoder Box Plus User's Manual*.
-



## The Main Screen

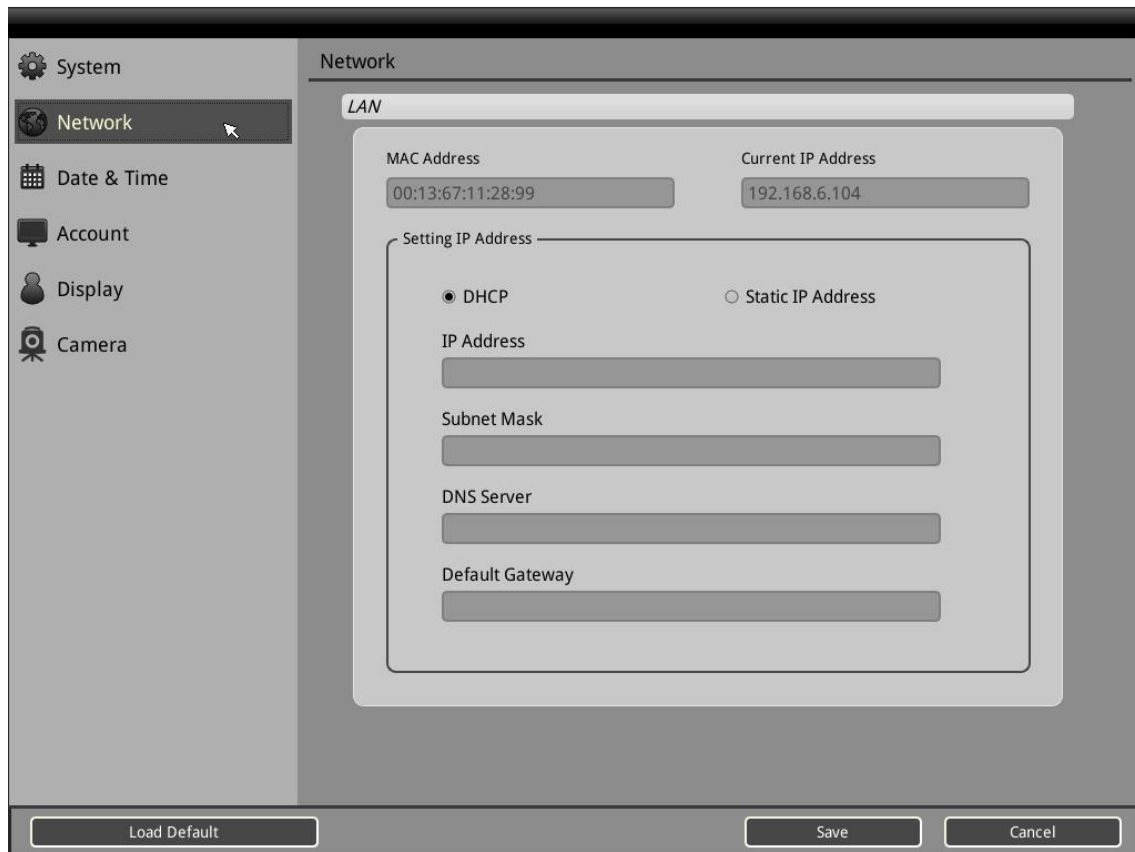
After you have connected the necessary wires and cables, GV-IP Decoder Box Plus will power on.



## 4. Setting up the Network

By default, GV-IP Decoder Box Plus will be **automatically assigned an IP address** by the DHCP server without further settings. To change the IP address to a fixed one, follow the steps below.

1. Click the **System Settings** icon , and select **Network**. This window appears.




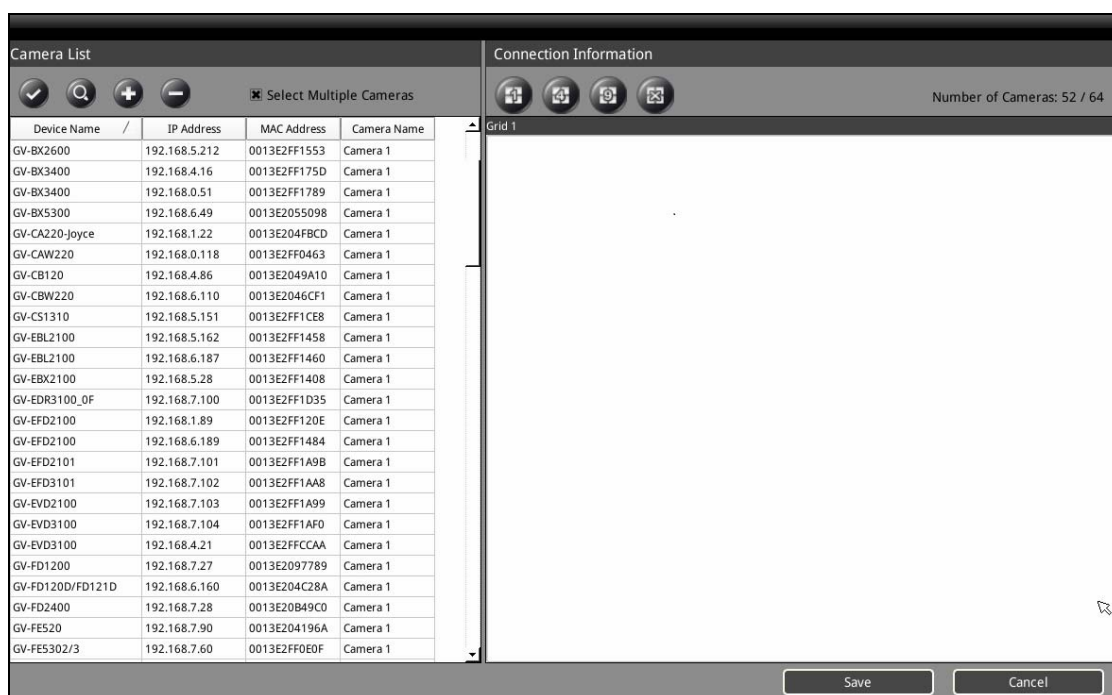
2. To assign a static IP address, select **Static IP Address**.
3. Double-click the fields to fill out the **IP Address**, **Subnet Mask**, **DNS Server**, and **Default Gateway**.
4. Click **Save**. When the device is connected to the network, the IP address will be shown in the Connected IP Address field.

## 5. Adding IP Devices to Live View Grid

Before you start, make sure all IP devices and GV-Mobile Server are under the same LAN with GV-IP Decoder Box Plus.

### 5.1 Adding IP Devices through Automatic Search



1. Click the **IPCam Search** icon  on the main page to search for GV-IP Devices, GV-Mobile Server and the third-party devices that adhere to ONVIF under the same LAN.



2. To change the device settings, right-click the device in the Camera List and select **Edit**. Double-click to modify the following default settings:
  - **Port:** The default port is 10000.
  - **Loop Time Interval:** By default, the live view of this device will be shown for 30 seconds before switching to the next device.
  - **Login Information:** The default user name and password are both **admin**.
3. Click **Save** to apply.

## 5.2 Adding IP Devices Manually

If you are unable to detect the IP device using the search function, you can add the device manually.

1. Click the **IPCam Search** icon  on the main page and click the **Add IPCam** icon .

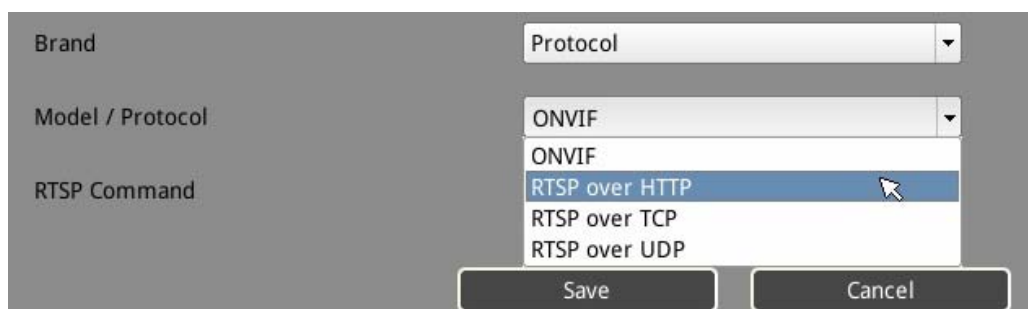
This dialog box appears.



IP Address	192.168.0.10
Port	10000
Loop Time Interval	30
<b>Login Information</b>	
User Name	admin
Password	*****
Camera Name	Camera 1
MAC Address	000000000000
Model / Protocol	GeoVision
Device Name	VS12
RTSP Command	
<input type="button" value="Save"/> <input type="button" value="Cancel"/>	

2. Fill out the following camera information. Double-click the fields to type.
  - **IP Address:** Type the IP address of the device.
  - **Port:** The default port is 10000.
  - **Loop Time Interval:** By default, the live view of this device will be shown for 30 seconds before switching to the next device.
  - **Login Information:** Type the ID and password of the IP device if needed. The default ID and Passwords are **admin**.
  - **Brand:** Select **GeoVision** for GV-IP Devices. To connect to third-party cameras through ONVIF or RTSP, select **Protocol**.

- **Model / Protocol:** For GV-IP Devices, select the model of the GV-IP Devices. For third-party devices, select **ONVIF** or one of the **RTSP** protocols.



The screenshot shows a configuration window with the following elements:

- Brand:** A text input field.
- Protocol:** A dropdown menu currently showing 'Protocol'.
- Model / Protocol:** A dropdown menu with the following options: 'ONVIF', 'ONVIF', 'RTSP over HTTP' (highlighted with a mouse cursor), 'RTSP over TCP', and 'RTSP over UDP'.
- RTSP Command:** A text input field.
- Buttons:** 'Save' and 'Cancel' buttons at the bottom right.

- **RTSP Command:** Type the RTSP link if you are connecting to the device through RTSP protocols.

3. Click **Save**.

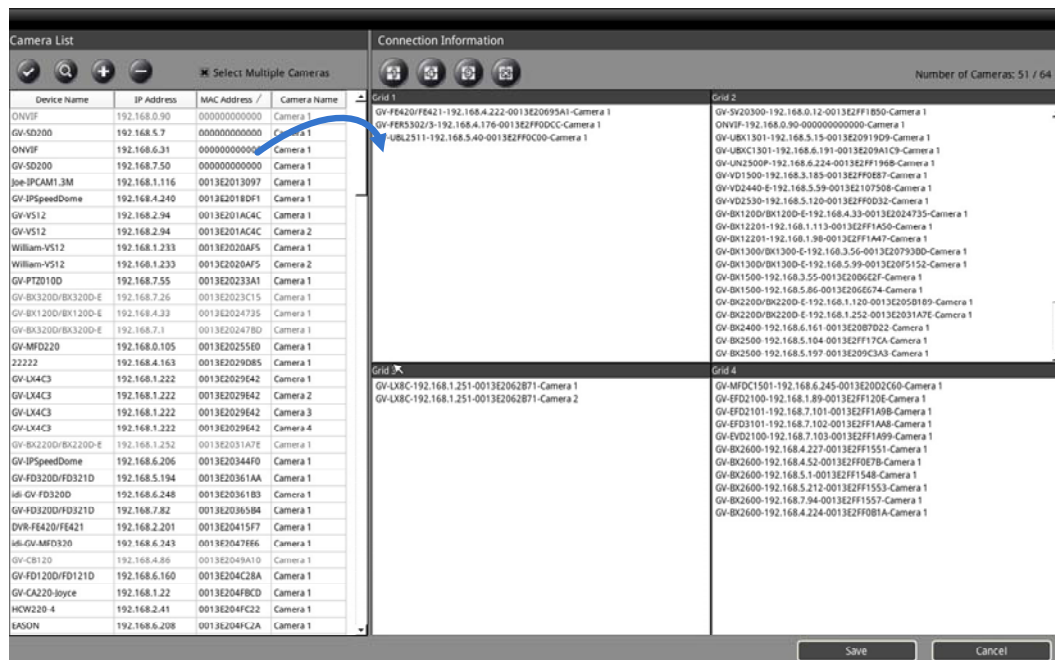
## 5.3 Assigning IP Devices to Live View Grid

GV-IP Decoder Box Plus can display camera live views in 1-Division, 4-Division, and 9-Division. You can assign a total of 64 streams of IP cameras.

1. Select a live view layout: 1-Division, 4-Division, and 9-Division.



2. Drag and drop the camera from the Camera List to the grids under Connection Information. To select multiple cameras at a time, click **Select Multiple Cameras** on the top.



3. To adjust the display order of the cameras, right-click the camera and click **Move Up** or **Move Down**.
4. To remove a camera, right-click the camera and click the **Delete** button.
5. Click **Save**.

The selected channels will be displayed on the monitor and be looped at an interval of 30 seconds by default. To change the looping interval, right-click the device and click **Edit**.

## 6. Adding Devices Using GV-IP Device Utility

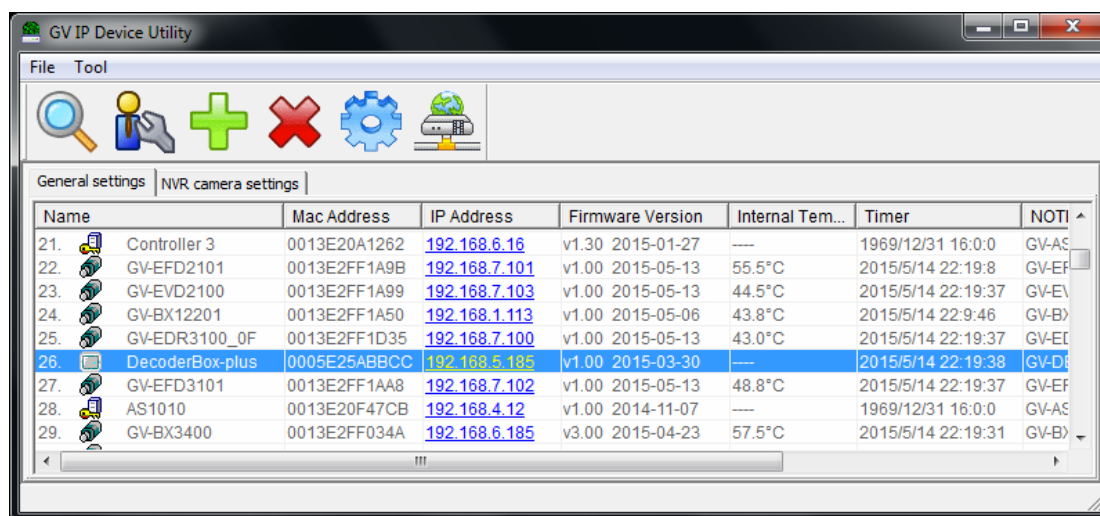
You may utilize the GV-IP Device Utility to add channels from GV-IP Devices, GV-System (with GV-Mobile Server) and third-party IP devices that adhere to RTSP or ONVIF. This method is recommended for adding third-party IP devices using RTSP protocols.

Before you start, make sure the following:

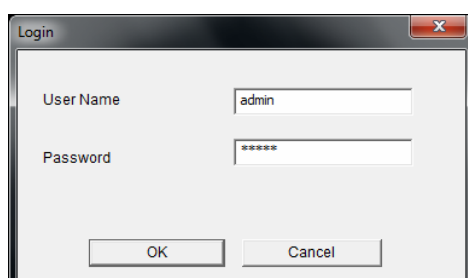
- All IP devices and GV-Mobile Server are under the same LAN with the GV-IP Decoder Box Plus.
- You have installed the GV-IP Device Utility on a computer under the same LAN.

### 6.1 Adding a GV-IP Device

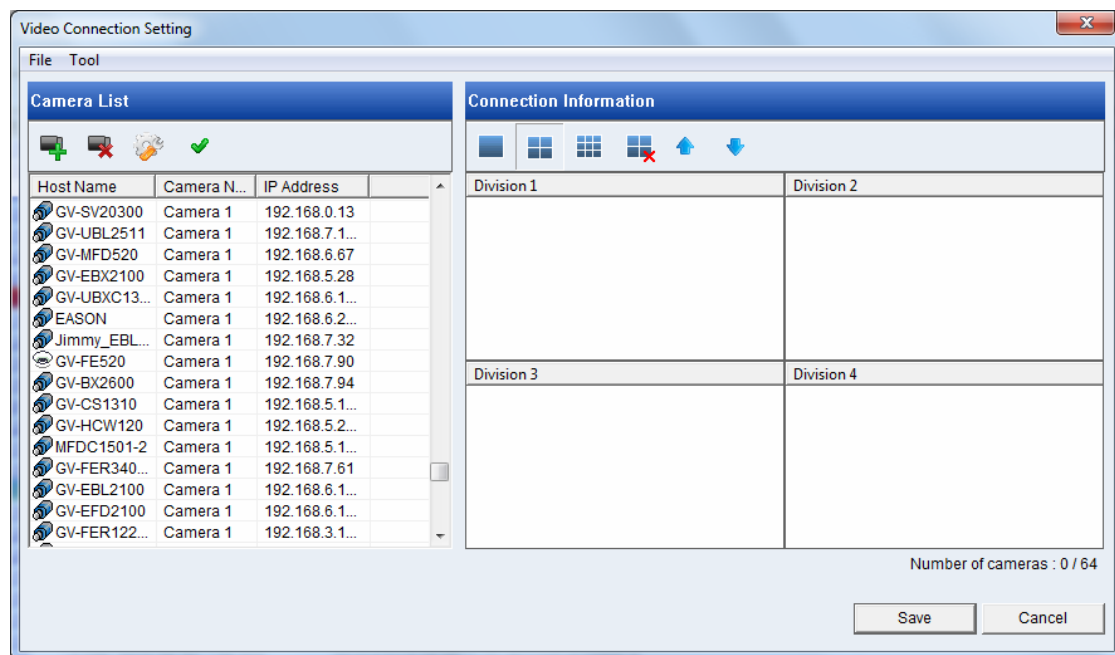
1. Run the **GV IP Device Utility** from the Software DVD. The GV-IP Device Utility window appears. It automatically searches for all the GV-IP Devices under the same LAN.









2. Click the IP address of your GV-IP Decoder Box Plus and select **Connect Setting**. This dialog box appears.



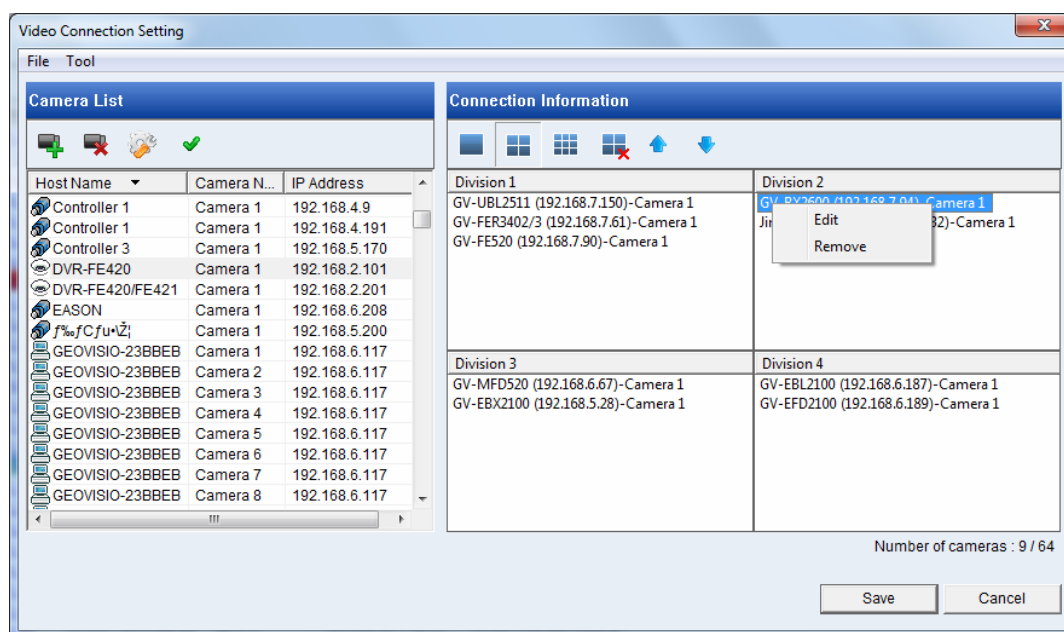
3. Type the ID and password of your GV-IP Decoder Box Plus and click **OK**. The default ID and password are **admin**. The Video Connection Setting window appears.



4. Use the Camera List toolbar to add, remove or configure a selected camera in the Camera List. Click the **Select All** button to select all the cameras on the list.
5. Under Connection Information, select a live view layout: **1 Division** (Single View) , **4 Division** (Quad View) , **9 Division** .
6. Add channels to the Connection Information column.
  - A. Drag and drop the camera from the Camera List to the Connection Information column.
  - B. Use the **Move Up**  and **Move Down**  buttons to change the display order of these channels.
  - C. To remove a selected camera, click the **Remove**  button.




- D. If you have changed the default ID and password of the added GV-IP Devices and GV-Mobile Server, right-click the channel, select **Edit** and type the username and password to log in for connection. By default, the login ID and password for all GV-IP Devices are **admin**.

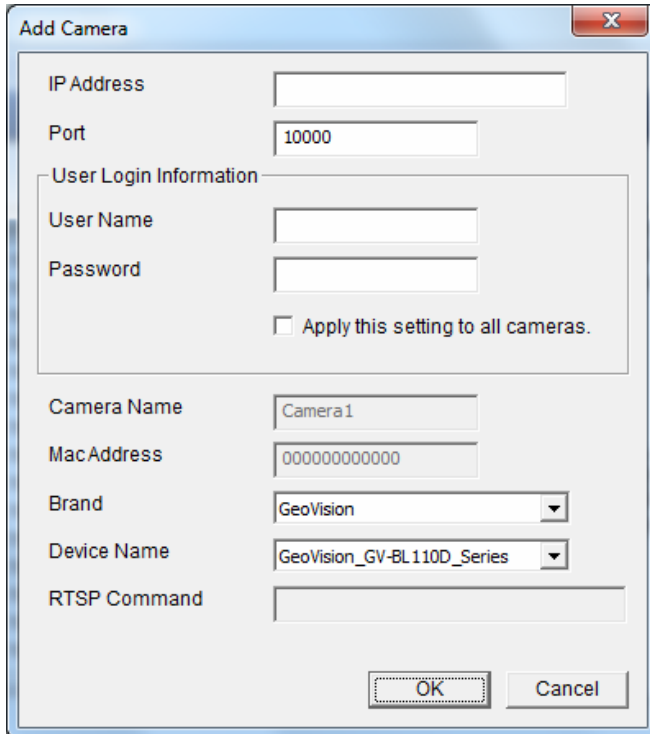


7. Click **Save**.

The cameras in the Connection Information column will be updated to the GV-IP Decoder Box Plus and looped at a 30-second interval by default.

## 6.2 Adding a Third-party Device

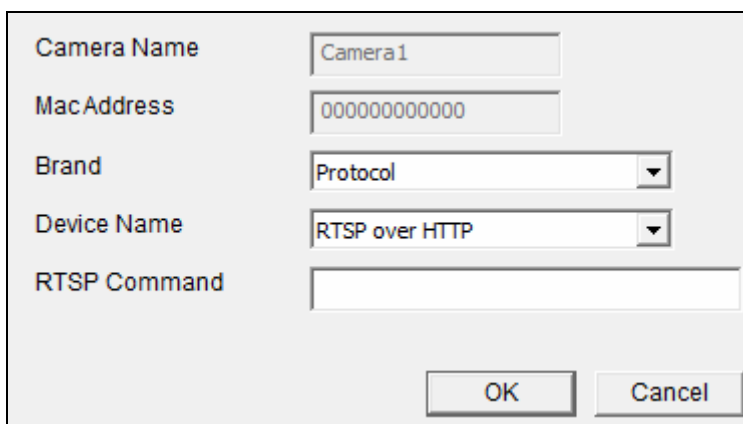
1. Click the **Add Camera** button  on the Video Connection Setting window. This dialog box appears.



The 'Add Camera' dialog box contains the following fields and controls:

- IP Address:** Text input field.
- Port:** Text input field with '10000' entered.
- User Login Information:** A group box containing:
  - User Name:** Text input field.
  - Password:** Text input field.
  - ☐ Apply this setting to all cameras.
- Camera Name:** Text input field with 'Camera1' entered.
- MacAddress:** Text input field with '000000000000' entered.
- Brand:** Dropdown menu with 'GeoVision' selected.
- Device Name:** Dropdown menu with 'GeoVision\_GV-BL110D\_Series' selected.
- RTSP Command:** Text input field.
- Buttons:** 'OK' and 'Cancel' buttons at the bottom right.

2. Type the IP address, user name and password of the device.
3. Select **Protocol** for Brand and one of the following protocols for Device Name. Type the RTSP command if required. Refer to your third-party IP camera's manual for this command.



This image shows the 'Add Camera' dialog box with the following configuration:

- Camera Name:** Camera1
- MacAddress:** 000000000000
- Brand:** Protocol
- Device Name:** RTSP over HTTP
- RTSP Command:** (Empty text field)
- Buttons:** 'OK' and 'Cancel' buttons.

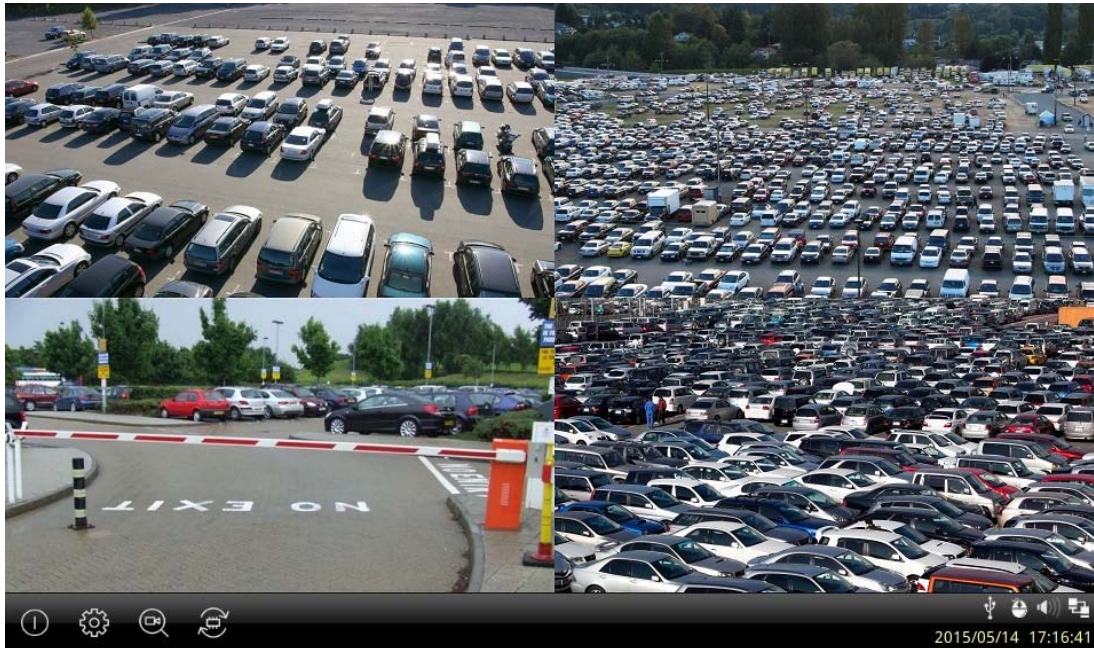
- **ONVIF:** Select this protocol if your camera adheres to ONVIF.
- **RTSP over HTTP:** The RTSP protocol uses an HTTP port for data streaming from the IP camera.

- **RTSP over TCP:** The RTSP protocol uses a TCP port for data streaming from the IP camera.
  - **RTSP over UDP:** The RTSP protocol uses a UDP port for data streaming from the IP camera.
4. Click **OK**. The camera is added to the list.
  5. Follow steps 5 and 6 in *6.1 Adding a GV-IP Device* to set up the play mode and display order for displaying channels. The channels will be displayed according to this order.
  6. Click **Save**.

The cameras on the Connection Information column will be updated to the GV-IP Decoder Box Plus and displayed on the monitor with the looping interval of 30 seconds by default.

## 7. Accessing Live View

After adding and assigning IP devices to live view grid, the camera live views are displayed in the main screen.



Note the following live view specifications

- The resolution of the added device must be lower than the maximum resolution listed below for each screen division. When the device resolution exceeds the maximum resolution supported, GV-IP Decoder Box Plus will connect to stream 2 of the device instead. If stream 2 is unavailable, the message “Resolution Error” appears on the screen.
- Fisheye dewarping is only supported in Single View and the top-left grid of Quad View.

Screen Division		Maximum Resolution	Fisheye Dewarping
1-Division (Single View)		2048 x 1944	Supported
4-Division (Quad View)	Top-left Grid	2048 x 1944	Supported
	Other 3 Grids	1920 x 1080	Not supported
9-Division		1280 x 720	Not supported


## 7.1 Capturing Snapshots


You can take snapshots of the live view and the snapshots will be automatically saved to the selected storage device (USB drive or SD card) in JPEG format.

Before you start, be sure:

- You have inserted a USB drive or SD card for storage.
- You have at least 30 MB of space on your storage device.
- The storage type is configured as FAT32 format.
- You have assigned a storage device in the System Setting page (see below)

Otherwise, the error icon  will appear when attempting to capture an image.

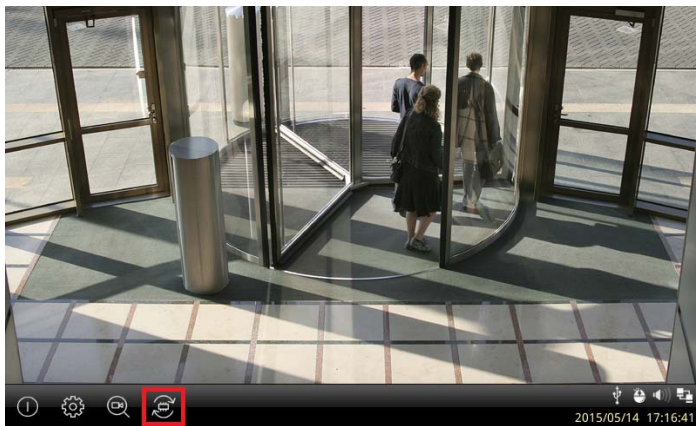
1. On the main menu, click the **System Setting** icon  and select **System** on the left.
2. Under **Storage Device**, select a storage device to store the captured screenshots, and click **Save**.
3. If the live view grid is still under looping mode, right-click the live view grid, select **Play Mode**, and select the device number to stop the looping.
4. Right-click the live view grid again, and select **Capture Snapshot**.

When captured successfully, a snapshot icon  appears at the top right corner of the screen.

## 8. Upgrading the Firmware

GeoVision will periodically release firmware updates on the website. You can upgrade firmware locally using a USB drive or SD card.

1. Copy the firmware file to the root folder of a USB drive or an SD card.
2. Connect the USB drive or SD card to the GV-IP Decoder Box Plus.
3. On the main screen, click the **Firmware Update** icon.



4. Select the storage device and select the firmware file.



5. Click **Update** to begin upgrading the firmware. The GV-IP Decoder Box Plus will restart after the firmware upgrade is completed.

---

**Note:** To upgrade the firmware remotely through GV-IP Device Utility, see [5.1.2 Upgrading Firmware through GV-IP Device Utility](#) in *GV-IP Decoder Box Plus User's Manual*.

---